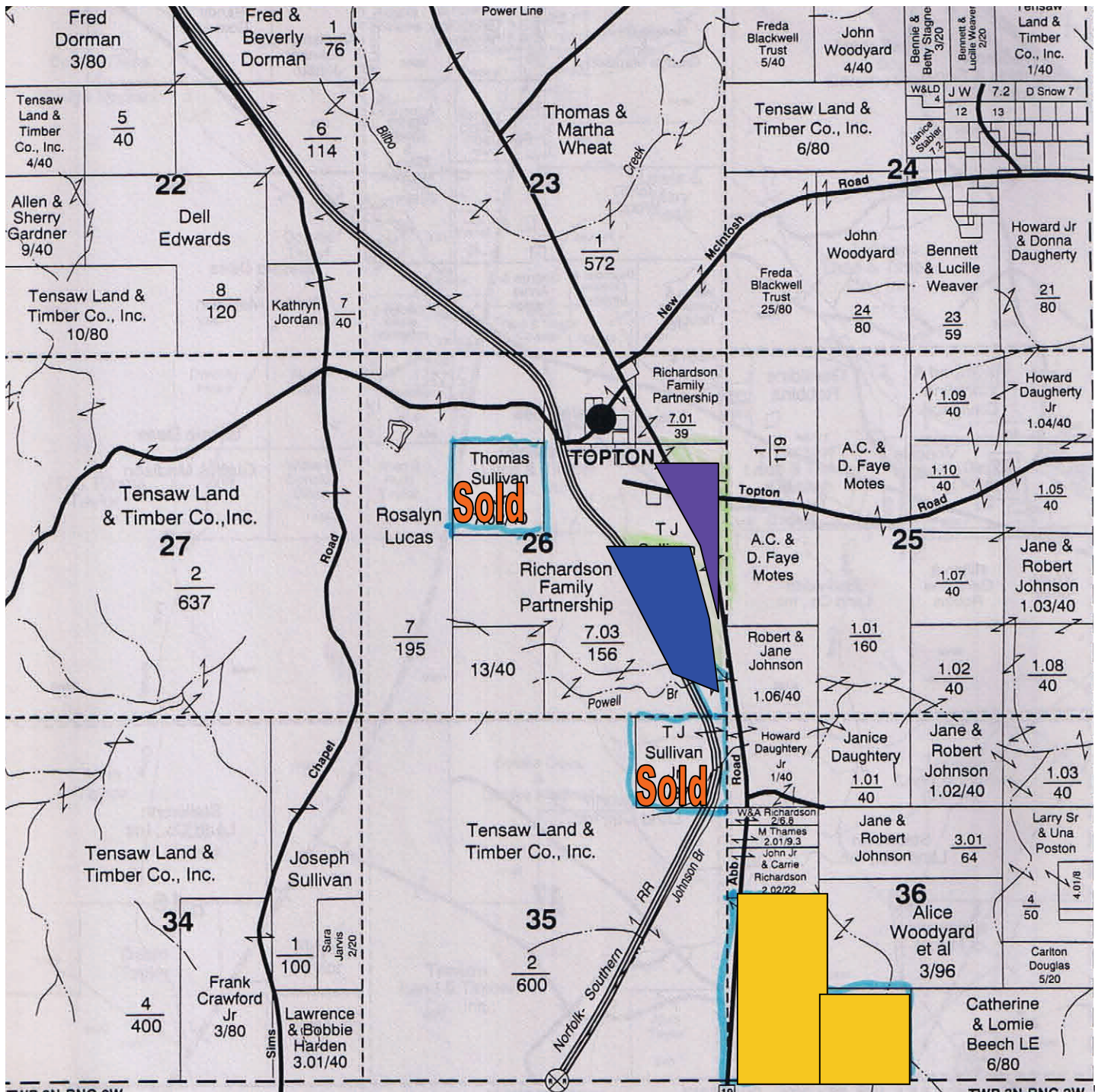





# Compass Properties



 120 +/- acres with over 1/4 road frontage. This property has 16 year old planted pines with power and water. Great home-site and long term timber investment. Property can not be divided. Price-\$2,500/acre

 30 +/- acres with road frontage. \$1750/acre or can be divided in 10 acre blocks for \$2750/acre

 32 +/- acres with road frontage \$1950/acre may be divided into 10 acre tract call for details

Call Jason Moore for more information or a showing office- 251-928-9596 cell 251-404-4444 Email= Jason@Compasslandandtimber.com

Price and availability subject to change